



Getting Started Guide

Getting Started With Your Dedicated Server

Setting up and hosting a domain on your Linux®
Dedicated Server using cPanel®.

Getting Started with Your Dedicated Server

Version 1.0 (03.30.06)

© Copyright 2006. All rights reserved.

Distribution of this work or derivative of this work is prohibited unless prior written permission is obtained from the copyright holder.

Trademarks Used in This Book

Linux® is a registered trademark of Linus Torvalds.

cPanel® is a registered trademark of cPanel Inc.

SSH® and Secure Shell® are trademarks of SSH Communications Security, Inc.

RedHat® and Fedora® are registered trademarks of Red Hat Software, Inc.

Mac® is a registered trademark of Apple Computer, Inc.

UNIX® is a registered trademark of The Open Group.

Windows XP®, Entourage®, and Outlook® are registered trademarks of Microsoft Corporation in the United States and/or other countries.

Thunderbird™ is an unregistered trademark of the Mozilla Foundation.

All other trademarks and copyrights are the property of their respective owners.

Table of Contents

Introduction	iv
Security Information	iv
Reprovisioning Your Server	v
Getting Help	v
Other Resources	vi
1 Setting Up Your Dedicated Server	1
Choosing a Host Name, User ID, and Password	1
Choosing a Host Name	1
Choosing a User ID	2
Choosing a Password for Your Server	2
Logging in to Your Manager for the First Time	3
2 Connecting to Your Dedicated Server	4
Connecting to Your Server Using Web Host Manager	4
Connecting to Your Server Using SSH	12
Gaining Root Access on Your Server	14
3 Adding a Domain to Your Server Using WebHost Manager	16
Logging in to cPanel's WebHost Manager	16
Creating an Account in WebHost Manager	17
Accessing cPanel for Your Domain	20

4	Setting Up DNS for Domains on Your Server	22
	Step 1 - Creating a Zone File for Your Domain	22
	Step 2 - Creating and Registering Your Domain Hosts	23
	Step 3 - Assigning the Name Servers to Your Domain	25
	Accessing Your Domain Using FTP (Uploading Files)	26
5	Setting Up Email on Your Dedicated Server	28
	Using cPanel to Set Up an Email Account	28
	Connecting to Your Email Account	31
	Accessing Your Account Using an Email Client	31
	Accessing WebMail for Domains on Your Server	31

Introduction

Unlike normal hosting plans, which put many customers' accounts on a single server, a dedicated server is reserved exclusively for the account and usage of a single customer. This means that you have exclusive rights to the server's bandwidth, memory, and storage space.

When you purchase a dedicated server, you actually lease a server box, which you can configure and set up according to your preferences, but it remains at our data center.

SECURITY INFORMATION

Compared to shared hosting accounts, a dedicated server offers more power and more versatility. You can run and install virtually anything on your server. However, with this added control comes added responsibility.

You are responsible for the security, backup, and maintenance of your dedicated server. We do not back up or install firewalls on your dedicated server.



Remember to keep your administrator password secure. Anyone who has administration, or root access, to your server can manipulate the software and content that you run on your server.

While we do not automatically back up your dedicated server, we do offer an FTP backup service with our dedicated server accounts. For more information about our FTP backup service, please visit our Web site.

You can also purchase a hardware firewall from us to use on your dedicated server. You can use a hardware firewall to control the traffic to and from your server. For more information about our firewall service, please visit our Web site.

REPROVISIONING YOUR SERVER

If, at any time, you want to revert to a clean setup on your dedicated server, you can reprovision your server. Reprovisioning erases all of the content on your server hard drive. Your server returns to the state it was in when you first purchased it.

You can reprovision your server using the Dedicated Hosting Manager.

► To Reprovision Your Server

1. Log in to your **Account Manager**.
2. Under the **Hosting & Email** section, select **Dedicated/Virtual Dedicated Servers**.
3. Click **Launch Manager** next to the server you want to reprovision. Your Dedicated Hosting Manager opens.
4. Under the **Support** section, click **Reprovision Server**. The Reprovision Server page displays.
5. If you choose to, enter a new host name and user name. These values default to the current host name and user name for this account.
6. Enter and confirm a new password, and then click **Continue**.

You will receive a confirmation notice once your server is reprovisioned and ready to go. Typically, your server is ready in less than five hours.

GETTING HELP

After you set up your server, you can easily get help by submitting a trouble ticket using your Dedicated Hosting Manager. Alternatively, you may contact Customer Support directly.

► To Open a Trouble Ticket

1. Log in to your **Account Manager**.
2. Under the **Hosting & Email** section, select **Dedicated/Virtual Dedicated Servers**.
3. Click **Launch Manager** next to the server account that you need help with.
4. In the Dedicated Hosting Manager, under **Support**, click **Trouble Ticket**.
5. Enter your contact information, including an email address and phone number.
6. Under **Trouble Ticket Description**, enter a summary and a detailed description of your issue.
7. Click **Continue**.
8. Review your trouble ticket information and click **Submit**.

OTHER RESOURCES

You can use these resources to learn more about managing your dedicated server:

Resource	URL
cPanel®/WHM™ Documentation	http://www.cpanel.net/docs.htm You can find documentation for cPanel and the Web Host Manager on cPanel's Web site.
Redhat®/Fedora® Core Documentation	http://fedora.redhat.com/docs/ OR http://www.redhat.com/docs/ Redhat's extensive documentation can help you get acquainted with the Linux operating system and the shell commands that you can use with SSH.

1 . Setting Up Your Dedicated Server

Once you have purchased your dedicated server and have received confirmation of the initial configuration, you can log in to your Dedicated Hosting Manager to finish your setup.

The Dedicated Hosting Manager makes it easy for you to manage your user name and password, schedule server maintenance, request additional IPs, and submit your trouble tickets.

CHOOSING A HOST NAME, USER ID, AND PASSWORD

The first time you access your Dedicated Hosting Manager, you'll need to create a host name, user ID, and password for your server. This is the user ID and password that you will use to connect to your server in the future. It's a good idea to have this information ready when you log in to your Manager for the first time.

Choosing a Host Name

The server's host name (also known as your account name) is a unique name for your server. If you have multiple dedicated server accounts, your host names will help you differentiate between them in your account list. Your host name can be anything, as long as it meets the following requirements.

Your Host name:

- must contain between 3-15 characters.
- must start with a letter.
- can only contain letters, numbers, single dots, or single dashes.
- cannot start or end with a single dot or dash.
- cannot include any spaces or any other special characters.

Choosing a User ID

Your user ID is the primary ID that you use to access your server. This is the user ID that you use to access your server from an SSH® or SCP program.



For security reasons, you cannot log in directly to your dedicated server as root. However, you do have root access. To gain root access to your server, log in with your user ID and then use the **su - root** command. To learn more about root access, see [Gaining Root Access on Your Server on page 9](#) of this guide.

Your user ID must be between 4 and 32 lowercase alphanumeric characters. However, your user ID **cannot**:

- begin with a number.
- contain spaces.
- contain symbols.
- contain capital letters.

Our dedicated servers also have a list of reserved terms that you cannot use as a user ID. These terms are listed below.

Reserved Terms on Our Dedicated Servers					
adm	binftp	halt	nobody	rpc	system
admin	body	iusrlp	nscdntp	rpcuserrpm	uucp
administrator	games	mailnull	operator	smmsp	vcsa
anonymous	gopher	news	pcap	sshd	
backup	guest	nfsno	root	sync	

Choosing a Password for Your Server

You will use this password, along with your user ID, to connect to your server. This is also the password that you will use when gaining root access to your server with the **su - root** command.

To keep your server secure, we require a strong password for your account. A strong password is a password that:

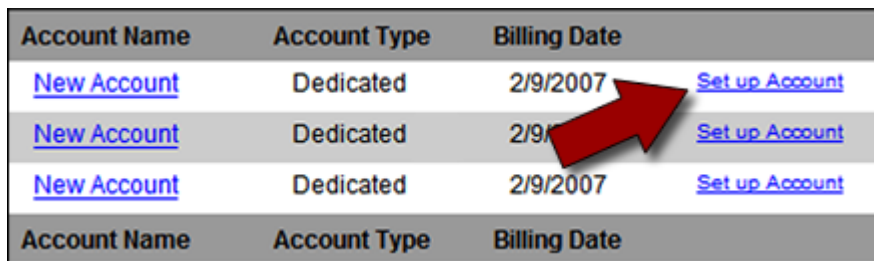
- contains between 7-14 characters.
- is made up of lowercase and uppercase letters, as well as numbers.
- does not begin with a number or symbol.
- does not contain backslashes, colons, single quotes, double quotes, spaces, dollar signs (\$), ampersands (&), or the caret symbol (^).
- does not contain your user name or the word "admin."

LOGGING IN TO YOUR MANAGER FOR THE FIRST TIME

Once you've decided on a host name, user ID, and password for your dedicated server, you can log in to your Dedicated Hosting Manager and finish setting it up.

► To Finish Setting Up Your Dedicated Server Account

1. Log in to your **Account Manager**.
2. Under **Hosting & Email**, select **Dedicated/Virtual Dedicated Servers**.
3. Next to the dedicated server account you want to set up, click **Set up Account**.



Account Name	Account Type	Billing Date	
New Account	Dedicated	2/9/2007	Set up Account
New Account	Dedicated	2/9/2007	Set up Account
New Account	Dedicated	2/9/2007	Set up Account

Fig. 1.1 - Set up Account link in your Account Manager.

4. On the **Account Setup** page, enter the host name for your server account.
5. Enter your user name and password for your account.
6. Click **Continue**.
7. Confirm your settings and click **Submit**.

Once you click **Submit**, your server should be ready to use in approximately twelve hours. You will receive an email confirmation message as soon as your server is ready.

After setup, you can use cPanel's Web Host Manager to connect to your server and manage your domains, email, and DNS. If you are a more experienced user, you can connect to your server using SSH. For more information about connecting to your server, see [Connecting to Your Dedicated Server on page 4](#) of this guide.

2 . Connecting to Your Dedicated Server

In general, there are two different ways you can connect to your dedicated server. You can use a Web-based interface like cPanel's WebHost Manager or you can connect directly to your server using the Secure Shell protocol (SSH).

Either way, you connect to your server using your server's IP address. If you are connecting via SSH, use the user ID and password you specified when you set up your account. If you are connecting to your account using cPanel's WebHost Manager, log in with the user ID "root" instead of the user ID you specified when you set up your account.

To find the IP addresses for your account, log in to your Dedicated Hosting Manager. Your Dedicated Hosting Manager lists the IP address for your server on the first page you see after you log in.



Depending on how you configured your server, you may have multiple IP addresses to choose from. You can use any of your IP addresses to connect to your dedicated server.

CONNECTING TO YOUR SERVER USING WEB HOST MANAGER

cPanel's WebHost Manager is a simple and intuitive Web-based control panel that you can use to manage your server. More specifically, you can use WebHost Manager to set up a domain, DNS, and email on your dedicated server.

Make sure you have your IP address ready before you try to log in to WebHost Manager. You'll need to use your IP address to access this control panel on your server. You can find the IP address to your server in your Dedicated Hosting Manager.

This procedure explains how to log in to cPanel's WebHost Manager for the first time and includes some post-installation steps. You only need to perform these steps once.

► To Access Your Dedicated Server Using cPanel's WebHost Manager

1. Open a Web browser and go to:

```
https://[[ipaddress]]:2087/
```

Where *[[ipaddress]]* is the IP address for your dedicated server.

2. When the WebHost Manager login prompt displays, enter **root** as your user name. Enter the password you defined when you set up your dedicated server account. Click **OK**.

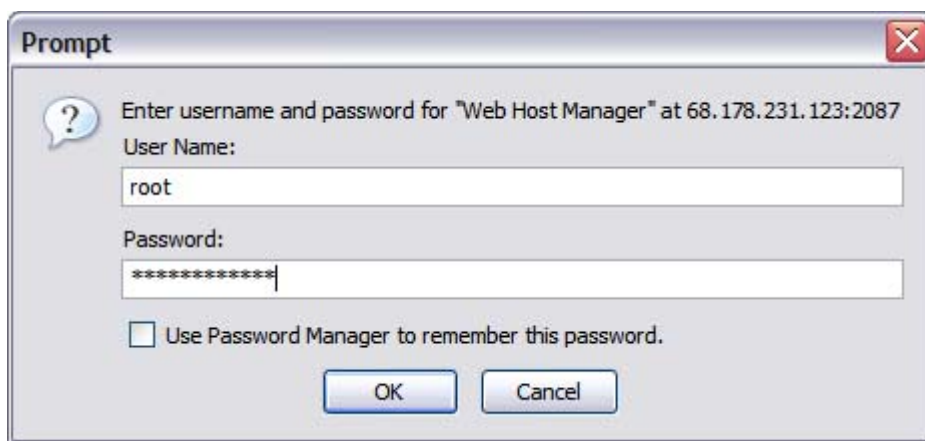


Fig. 2.1 - Logging in to WebHost Manager.

3. When you log in for the first time, WebHost Manager walks you through a wizard to help you set up your server. Under the Welcome to Web Host Manager section on the left, click **Next**.

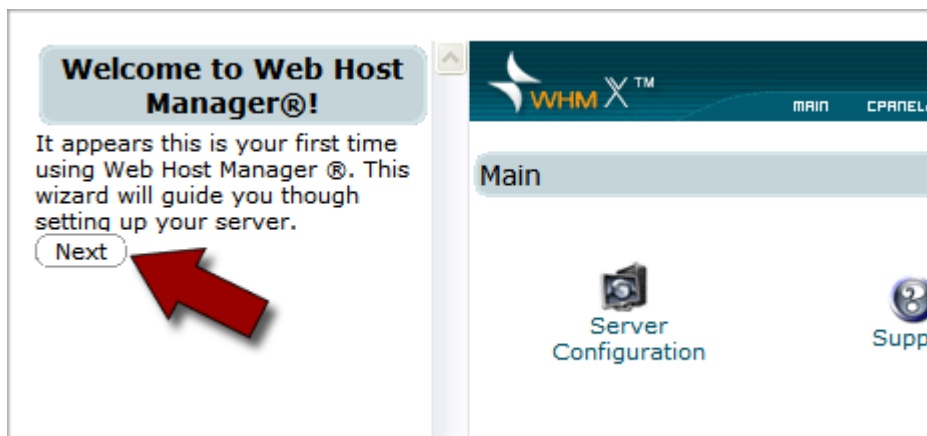


Fig. 2.2 - Logging in to WebHost Manager.

4. The End-User License Agreement for cPanel displays on the right. Review the license agreement and click **I Agree**.
5. The Edit Setup page displays. This is where you configure the basic setup for your server. In the **Server Contact E-Mail Address** section, enter an administrative email address for this server.



Server Contact E-Mail Address

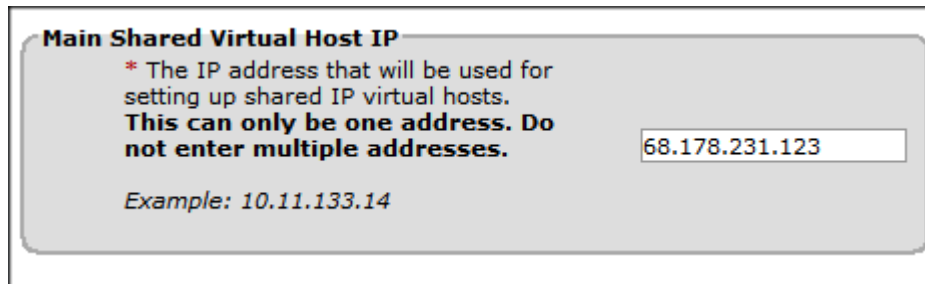
* Enter an email address you can be reached at in case a problem arises with this server.

Examples: john@doe.com,
john.q.public@anonymous.com,
user@host.com

jsmith@coolexample.com

Fig. 2.3 - Creating a Server Contact E-Mail Address.

6. In the **Main Shared Virtual Host IP** section, enter the default IP address for your server. Typically, this is the same IP you used to connect to your WebHost Manager.



Main Shared Virtual Host IP

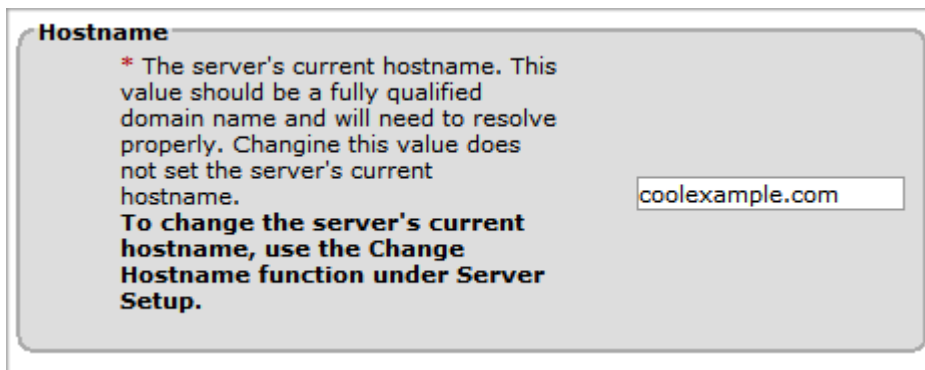
* The IP address that will be used for setting up shared IP virtual hosts. **This can only be one address. Do not enter multiple addresses.**

Example: 10.11.133.14

68.178.231.123

Fig. 2.4 - Specifying the Main Shared Virtual Host IP.

7. In the **Hostname** section, enter the primary domain name for your server. This needs to be a fully qualified domain name that you own. In this example we use "coolexample.com."



Hostname

* The server's current hostname. This value should be a fully qualified domain name and will need to resolve properly. Changing this value does not set the server's current hostname. **To change the server's current hostname, use the Change Hostname function under Server Setup.**

coolexample.com

Fig. 2.5 - Specifying the host name for your server.

- Under the **Primary Nameserver** and **Secondary Nameserver** sections, type **ns1.yourdomainnamehere.com** and **ns2.yourdomainnamehere.com**, where *yourdomainnamehere.com* is the primary domain for your server. For example, ns1.coolexample.com and ns2.coolexample.com.

Primary Nameserver

* Enter the hostname of the primary nameserver (normally, the name of this server) you wish to use when creating new domains or subdomains.

Assign Ip Address

Add an A entry for this nameserver

Examples: ns.myhost.com, ns1.myhost.com, dns1.mydomain.com

Secondary Nameserver

* Enter the hostname of the secondary nameserver you wish to use when creating new domains or subdomains.

Assign Ip Address

Add an A entry for this nameserver

Examples: ns.myhost.com, ns1.myhost.com, dns1.mydomain.com

Fig. 2.6 - Specifying the your primary and secondary nameservers.



NOTE

This is just the preliminary step to setting up nameservers on your server. For more complete information on setting up DNS for your server, see [Setting Up DNS for Domains on Your Server on page 22](#).

- Keep the other default settings that WebHost Manager created for you, and click **Save** at the bottom of the page.



TIP

There are a lot of other settings that you can configure on the Edit Setup page. To find out more about the other features that we do not cover in this guide, please visit the cPanel Web site at:

<http://www.cpanel.net>

- Under the **Step 2: Setup Server Information** section on the left, click **Next Step**.



Fig. 2.7 - Moving on to Step 3 of the Setup Wizard.

- Under the **Step 3: Setup Quotas** section on the left, click **Next Step**. You do not have to wait for the quota setup to finish.

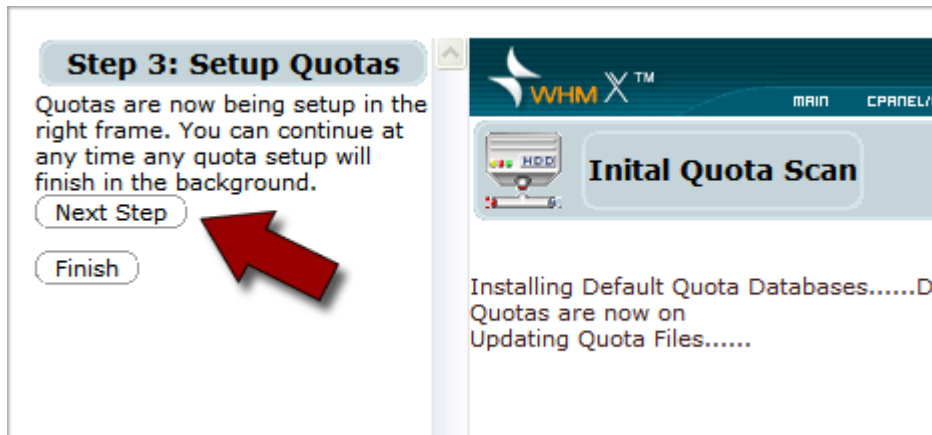


Fig. 2.8 - Setting up quotas.

- Under the **Enable Nameserver** section on the right, click **OK**.



Fig. 2.9 - Enabling nameserver.

- Under the **Step 4: Setup Nameserver** section on the left, click **Next Step**.



Fig. 2.10 - Moving on to Step 5 of the setup wizard.

- Under the **Step 5: Setup Resolver Config** section on the left, click **Next Step**.



Fig. 2.11 - Moving on to Step 6 of the setup wizard.

- In the **MySQL Root Password** section, enter a root (admin) password for MySQL on your server and click **Change Password**.



Fig. 2.12 - Setting a MySQL root password on your server.

- Under the **Step 6: Set Mysql Root Password** section on the left, click **Finish**.



Fig. 2.13 - Finishing the Setup Wizard.

- Click **Continue**.

This is what the administrator interface looks like after you have finished going through the Setup Wizard:

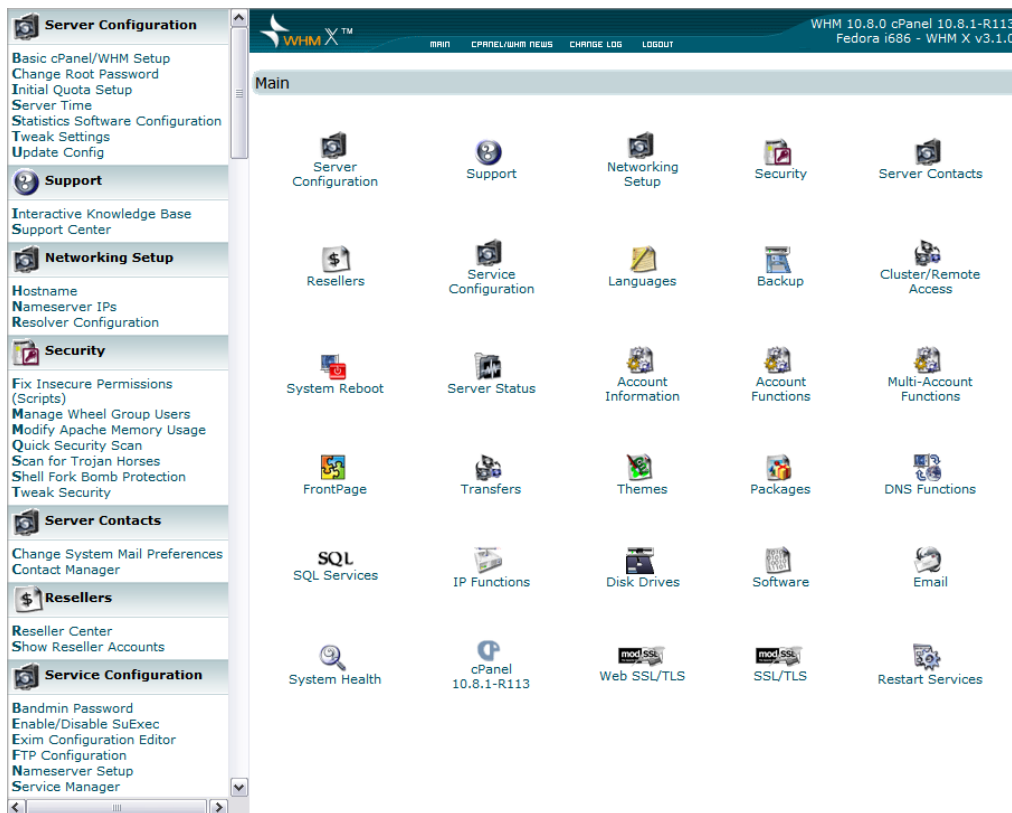


Fig. 2.14 - The main page in WebHost Manager.

The main page in cPanel's WebHost Manager is the main dashboard that you use to manage and monitor your dedicated server. From here you can add domains to your server, create new email accounts, manage IP addresses, and start and stop services on your server.



WebHost Manager has numerous features that can help you manage your server. To find out more about WebHost Manager and the other features that we do not cover in this guide, please visit the cPanel Web site at:

<http://www.cpanel.net>

For information about how to set up a domain and email using WebHost Manager, see [Adding a Domain to Your Server Using WebHost Manager on page 16](#) and [Setting Up Email on Your Dedicated Server on page 28](#).

CONNECTING TO YOUR SERVER USING SSH

If you are a more experienced user and are comfortable using a command-line interface, you can use the Secure Shell, or SSH, protocol to connect to your dedicated server.

First, download and install an SSH client on your computer. If you're using Windows®, we recommend using PuTTY (<http://www.putty.nl/>). Mac® users can use Mac SSH (<http://www.macssh.com>). Linux and UNIX users can use OpenSSH.

Once you have installed an SSH client, log in to your server using your IP address, user name, and password. In this example, we use PuTTY.



Remember, before you log in to your server, make sure you have your IP address ready. You'll need to use your IP address to access your server. You can find the IP address to your server in your Dedicated Hosting Manager.

► To Connect To Your Server Using SSH (PuTTY)

1. Open your SSH client (PuTTY).
2. In the **Host Name (or IP Address)** field, type the IP address for your server.

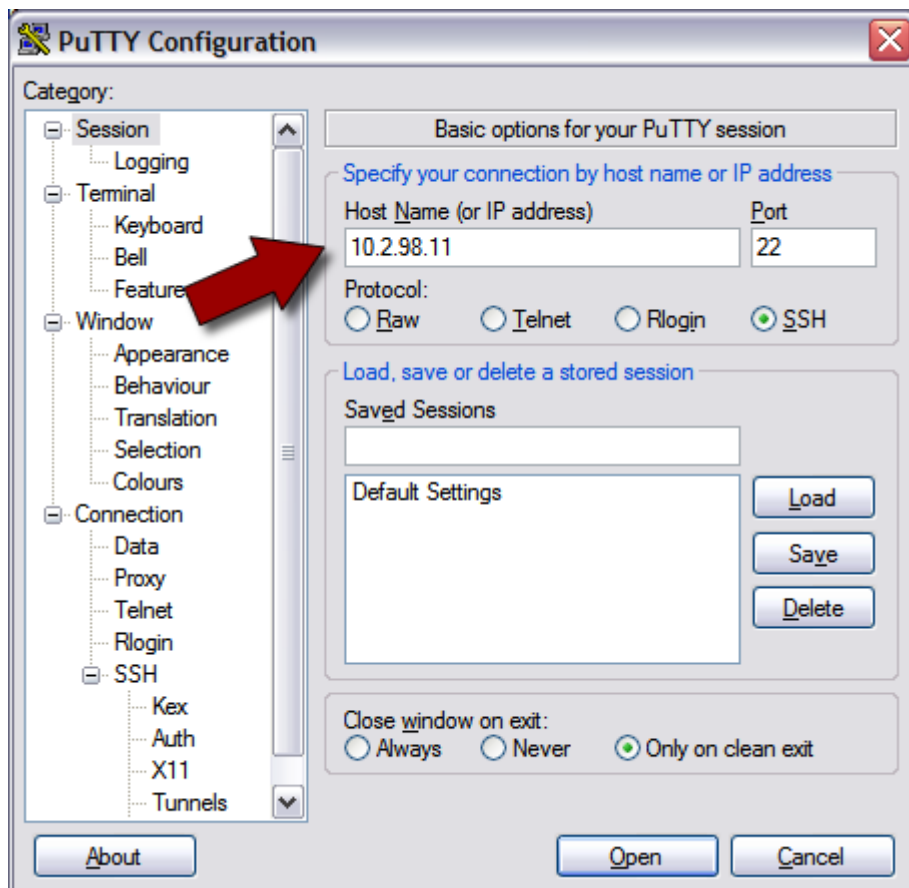


Fig. 2.15 - Logging in to your server using SSH (PuTTY).

3. Click **Open**. This is the basic SSH command-line interface.

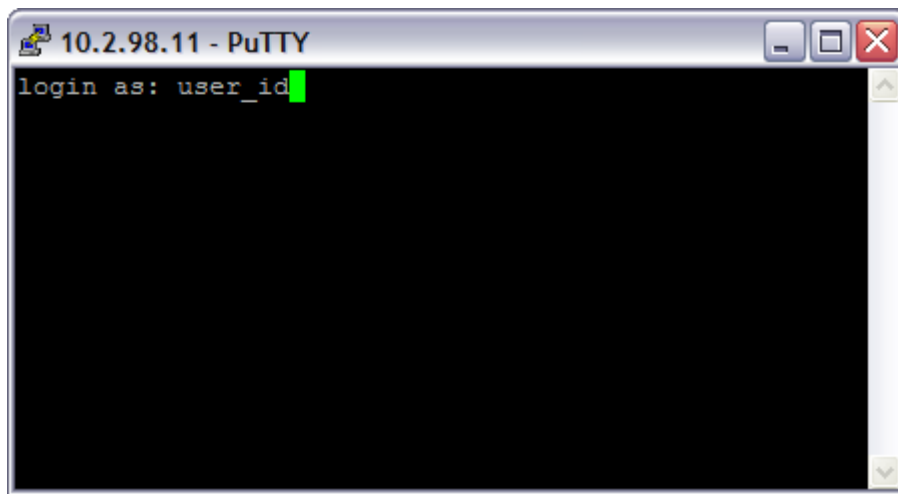


Fig. 2.16 - Logging in to your server using SSH (PuTTY).

4. Log in to your server with the user ID and password you created when you set up your account.
5. Once you log in, you can execute shell (Bash) commands to navigate and manage your server.

Typically, only advanced users that are familiar with Linux and shell commands connect to their servers using SSH. You should be able to take care of most of your server management tasks using WebHost Manager.

GAINING ROOT ACCESS ON YOUR SERVER

On our dedicated Linux servers, root is the administrative user that you can use to access and edit all of the files on your server (this includes system-critical files). You can also use root to install and uninstall programs on your server.



Using root on your server can be dangerous. When you work on your server as root, you can potentially destroy important files and delete programs by accident. Typically, you should only use root to make one or two changes to your system and then switch back to your normal user account.

You cannot log in to your dedicated server remotely using root. If you need root access on your dedicated server, use the **su - root** command once you have logged in with your User ID.

The su (short for substitute user) command makes it possible to become the root user, temporarily, while you are logged in with your normal User ID.

To use su to log in as root, type:

```
su - root
```

By default, your root password is the same as the password you use with your normal User ID.



When you are finished performing tasks as the root user, type **exit** to return to your normal user ID.

To keep your data and server settings secure, you should only use root to perform a couple of specific tasks at a time.

3. Adding a Domain to Your Server Using WebHost Manager

A domain name works a lot like an address forwarding service. All of your Web site content sits on a computer with a unique address—your IP address. This is the same IP address that you use to connect to your server using WebHost Manager. Your domain name directs visitors to your site using this IP address.



Before you set up a domain to host on your dedicated server, make sure you have already registered that domain through an accredited domain registrar.

To make the connection between domain name and IP address work, you need to create a new account, or domain, in WebHost Manager.

LOGGING IN TO CPANEL'S WEBHOST MANAGER

There are two ways that you can access the WebHost Manager control panel on your dedicated server. You can log in to your Dedicated Hosting Manager and click the **Launch cPanel** icon, or you can go to the following URL:

```
https://[[ipaddress]]:2087/
```

Where *[[ipaddress]]* is the IP address for your dedicated server.

CREATING AN ACCOUNT IN WEBHOST MANAGER

Setting up a hosting account for a domain in WebHost Manager only takes a couple of steps. When you create an account in WebHost Manager, it automatically creates hosting and a zone file for a particular domain.



CAUTION

Before you create an account, make sure that you complete the initial WebHost Manager setup process outlined in [Connecting to Your Dedicated Server on page 4](#).

► To Create an Account in WebHost Manager

1. Log in to WebHost Manager using **root** for your user name and the password you created when you set up your dedicated server.

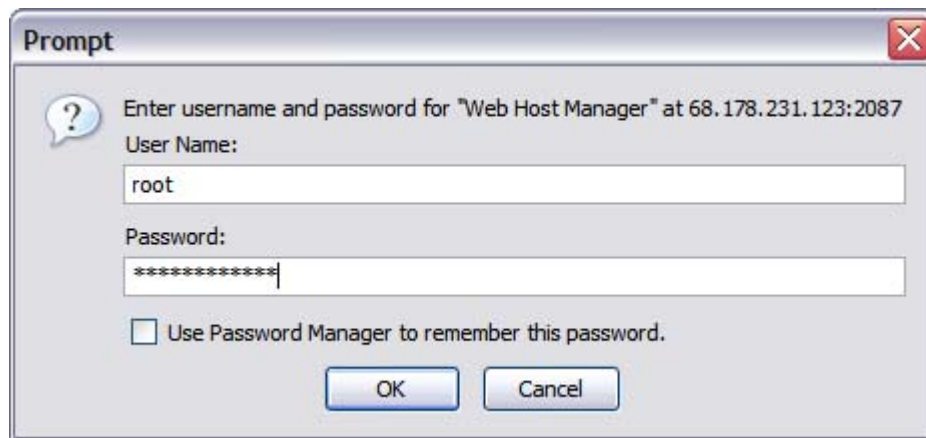


Fig. 3.1 - Logging in to WebHost Manager.



NOTE

If this is the first time you have logged in to cPanel's WebHost Manager, you'll need to complete some initial setup steps. See [Connecting to Your Dedicated Server on page 4](#) for more information.

- From the Main section on the right, select **Account Functions**.



Fig. 3.2 - Opening the Account Functions section in WebHost Manager.

- Click **Create a New Account**.



Fig. 3.3 - Creating a new account in WebHost Manager.

- To create a new account, enter your **Domain** name, **UserName**, **Password** and **Contact Email**. WebHost Manager automatically creates a user name based on the first 8 letters of your domain name.

Create a New Account		Create	Reset
Domain	coolexample.com	UserName	coolexam
Password	*****	Quota	unlimited MegaBytes
Ip	<input type="checkbox"/>	Cgi Access	<input checked="" type="checkbox"/>
Shell Access	<input checked="" type="checkbox"/>		
Frontpage Extentions	<input checked="" type="checkbox"/>		
Max Ftp Accounts	unlimited		
Max Email Accounts	unlimited		
Max Email Lists	unlimited		
Max SQL Databases	unlimited		
Max Sub Domains	unlimited		
Max Park Domains	0		
Max Addon Domains	0		
Bandwidth Limit	unlimited MegaBytes		
cPanel Theme	x		
Ip Address (only for new ip-based accounts)	--Auto Assign--		
Package	---		
Contact Email	janesmith@coolexample.com		
Reseller	<input type="checkbox"/>	Owner (only if reseller)	<input checked="" type="checkbox"/>

Fig. 3.4 - Entering your account information in WebHost Manager.

- The other fields on this page are optional. You can use these fields to set many of the hosting preferences for your domain.
- When you finish adding your account information, click **Create**.

WebHost Manager displays a results page that outlines the creation of your account. If there are no problems, WebHost Manager displays **Account Creation Complete!!!** at the bottom of the page.

You can now access the cPanel control panel for your domain.

ACCESSING CPANEL FOR YOUR DOMAIN

cPanel is an easy to use interface for managing the hosting account for your domain. Once you create an account in WebHost Manager, you can upload files, create databases, add email addresses, and customize your hosting account.

There are two ways to access cPanel using WebHost Manager. You can log in to your Web-Host Manager and go to Account Information > List Accounts and click the **cPanel** icon next to the domain you want to manage, or you can go to the following URL:

```
http://yourdomainnamehere.com/cpanel
```

Where *yourdomainnamehere.com* is the domain name you want to manage.

Log in to cPanel with the user name and password you created when you set up the account for your domain in WebHost Manager.

This is an example of what the cPanel interface looks like for your domain:

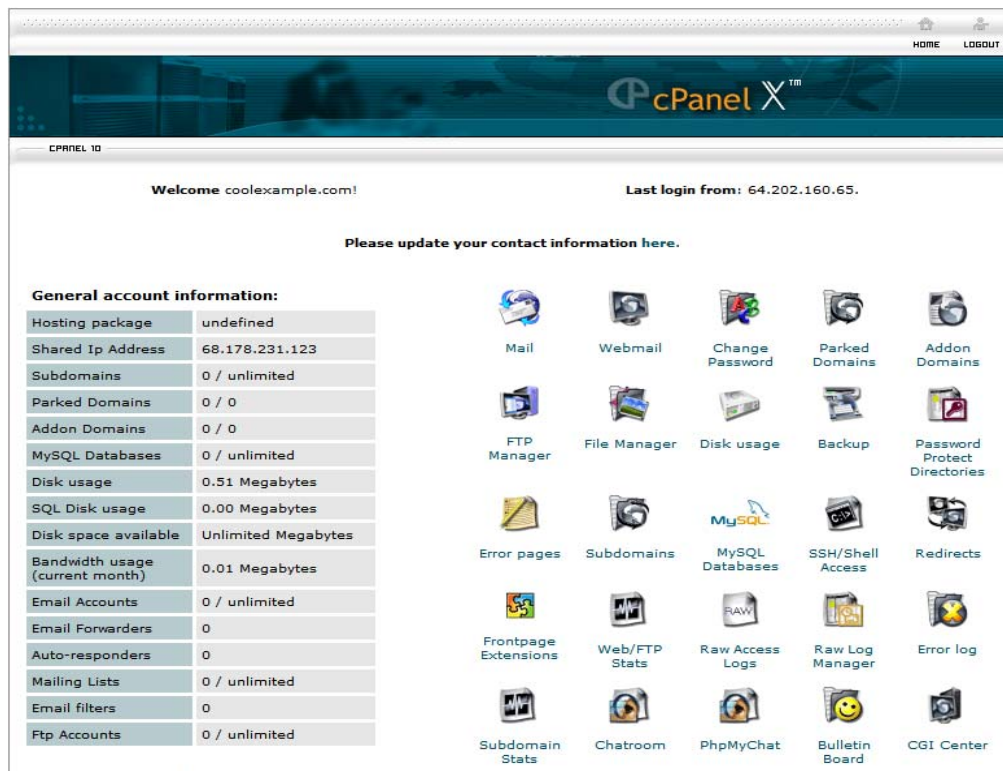


Fig. 3.5 - cPanel for your domain.

cPanel's main page is made up of three sections, the General Account Information and General Server Information on the left and the Main Management section on the right.

You can now access the directory for your domain using the cPanel **File Manager** and upload files to your hosting account. **However, in order for people to see your Web site online, you need to configure the DNS for your site.**

The next section of this guide, [Setting Up DNS for Domains on Your Server](#), walks you through DNS setup. Once you configure the DNS for your site, you can FTP into your Web site hosting directory in the same way that you would with a traditional hosting account.



WebHost Manager and cPanel have numerous features that can help you manage your server and hosting accounts. To find out more about the other features that we do not cover in this guide, please visit the cPanel site at:

<http://www.cpanel.net/>

4 . Setting Up DNS for Domains on Your Server

Name servers are the Internet's equivalent to a phone book. A name server maintains a directory of domain names that match certain IP addresses.

This makes it possible for people across the Internet to access your Web site using a familiar domain name, instead of having to remember a series of numbers.

This section of the guide walks you through setting up your dedicated server as the name server for your domain and covers the procedure for assigning this name server to your domain.

After you set up your DNS, it can take up to 48 hours before your domain resolves to your IP address. This period is referred to as the propagation period.



NOTE

We do not directly control the propagation period for your domain. While it should take no more than 48 hours, we cannot guarantee this time frame.

STEP 1 - CREATING A ZONE FILE FOR YOUR DOMAIN

To use your dedicated server as a name server, all of the domains on your server must have a zone file. A zone file is the file that maps your IP address to your domain name. It's easy to set up a zone file for your domain using cPanel's WebHost Manager, because WebHost Manager automatically creates a zone file for any domain you set up.

If you have not set up an account for your domain in WebHost Manager, please see [Adding a Domain to Your Server Using WebHost Manager on page 16](#) before proceeding.

STEP 2 - CREATING AND REGISTERING YOUR DOMAIN HOSTS

Once you set up a domain and create a zone file in WebHost Manager, you need to create and register two domain hosts for your domain. If your domain is registered with us, you can log in to your account manager to complete this step.

If your domain name is registered with another company, you need to contact that company for instructions regarding domain host registration.

► To Register Your Domain Hosts

1. Log in to your **Account Manager**.
2. Under the **Domains** section, select **Manage Domains**.
3. Click the domain name you're going to host on your dedicated server. In this example, we'll use `coolexample.com`.

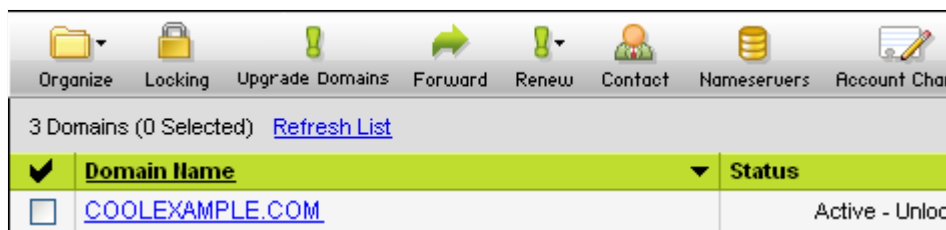


Fig. 4.1 - Selecting the domain you're going to manage.

4. On the bottom-left of the page under **Host Summary**, click **View/Modify Detail**

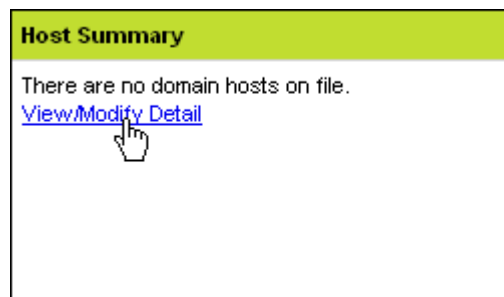


Fig. 4.2 - Opening your Domain Host Summary.

5. Enter a name for each of your domain hosts. This prefix can be anything that is easy for you to remember (like **NS1** and **NS2**)..



These domain hosts can be used for other domains hosted on your dedicated server. You do not need to create new domain hosts for each of your domains.

Host Name	Domain	Host IP
Host Name 1: NS1	.COOLEXAMPLE.COM	Host IP 1: 10 . 1 . 69 . 1
Host Name 2: NS2	.COOLEXAMPLE.COM	Host IP 2: 10 . 1 . 69 . 1
Host Name 3:	.COOLEXAMPLE.COM	Host IP 3:
Host Name 4:	.COOLEXAMPLE.COM	Host IP 4:

Fig. 4.3 - Entering your new domain hosts.

6. Enter the **IP Address** for your server. You can find the IP address for your server in your Dedicated Hosting Manager.
7. Click **OK**.

STEP 3 - ASSIGNING THE NAME SERVERS TO YOUR DOMAIN

Now that you have created and registered two domain hosts, you need to change the information for your domain to use these new servers. If your domain is registered with us, you can log in to your account manager to complete this step.

If your domain name is registered with another company or you manage the DNS for your domains with a third-party tool, you'll need to contact that company for information about assigning name servers to your domain.

► To Assign the Name Servers to Your Domain

1. Log in to your **Account Manager**.
2. Under the **Domains** section, select **Manage Domains**.
3. Click the domain name you want to host on your dedicated server.
4. Under **Name Servers** click the current name server names..

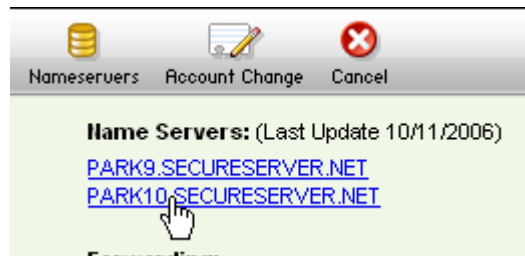


Fig. 4.4 - Opening the Set Nameservers section.

5. In the **Set Nameservers** section, select the **Custom Name Servers** tab..

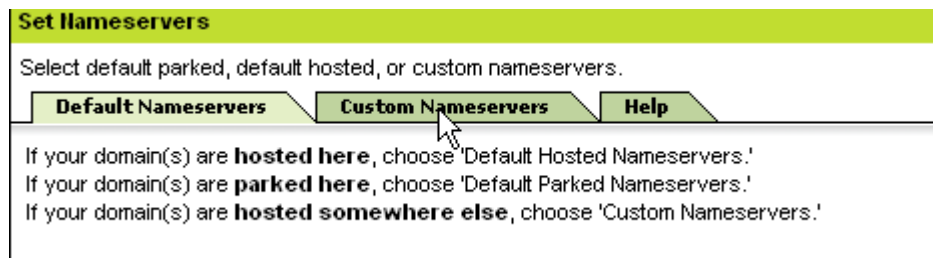


Fig. 4.5 - Opening the Custom Nameservers section.

- 6. For **Nameserver 1** and **Nameserver 2**, enter the names of the domain hosts you created previously. In this example, we're using ns1.cooexample.com and ns2.cooexample.com.

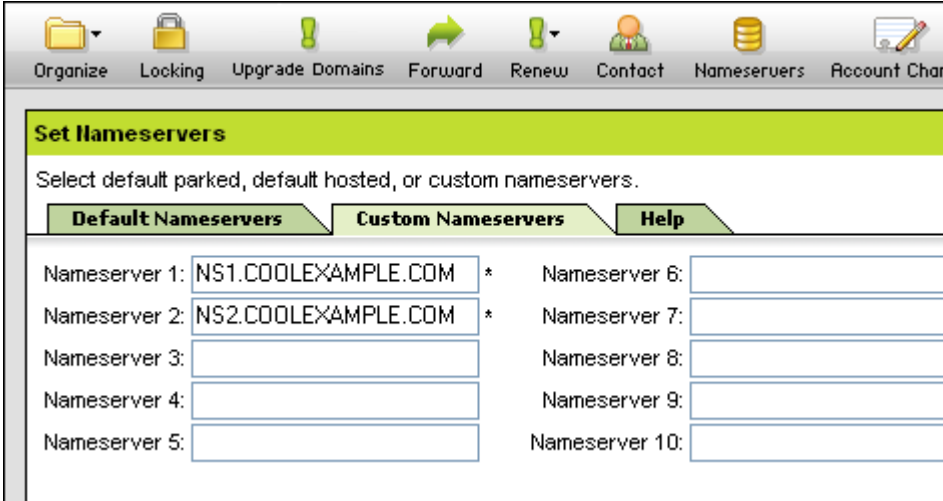


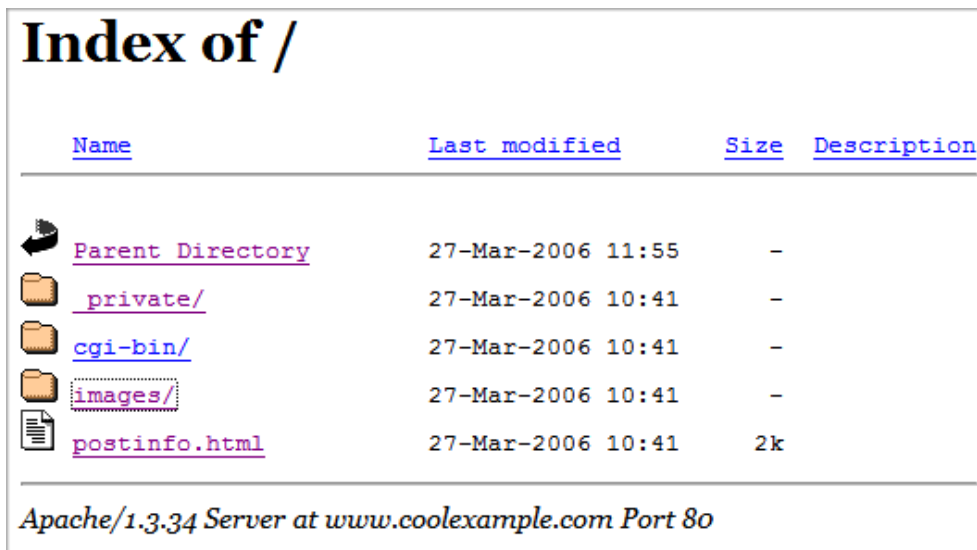
Fig. 4.6 - Updating the name servers for your domain.






- 7. Click **OK**

ACCESSING YOUR DOMAIN USING FTP (UPLOADING FILES)

After you set up your DNS, it can take up to 48 hours before your domain resolves to your IP address. This period is referred to as the propagation period.

Once your domain resolves, you will see a default index listing for your site when you type your domain name into a browser. This is an example of a default index listing page:



<u>Name</u>	<u>Last modified</u>	<u>Size</u>	<u>Description</u>
 Parent Directory	27-Mar-2006 11:55	-	
 private/	27-Mar-2006 10:41	-	
 cgi-bin/	27-Mar-2006 10:41	-	
 images/	27-Mar-2006 10:41	-	
 postinfo.html	27-Mar-2006 10:41	2k	

Apache/1.3.34 Server at www.coolexample.com Port 80

Fig. 4.7 - Example of the default index listing page.

When this page displays, you can connect to the hosting account for your domain using FTP or cPanel (<http://www.yourdomainnamehere/cpanel>) to upload files to your Web site.



To make your Web pages viewable, upload them to the “www” or “public_html” directory in your hosting account. This directory is the root directory for your Web site.

5 . Setting Up Email on Your Dedicated Server

Once you have set up your domain and hosting, setting up email accounts in cPanel only takes a few steps.

To set up email accounts, use cPanel instead of WebHost Manager for the domain you want to configure. For information on how to connect to cPanel for your domain, see [“Accessing cPanel for Your Domain” on page 20](#).



NOTE

If you followed the procedure in the previous section of this guide to set up the DNS for your domain, you do not need to modify your MX records to set up email accounts in cPanel.

USING CPANEL TO SET UP AN EMAIL ACCOUNT

The easiest way to set up an email account for a domain on your dedicated server is using the cPanel control panel.

► To Set Up Email Accounts for Your Domain Using cPanel

1. Access cPanel using to the following URL:

```
http://yourdomainnamehere.com/cpanel
```

Where *yourdomainnamehere.com* is the domain name you want to manage.

2. Log in using the user name and password you created when you set up the account for your domain in WebHost Manager.

3. From the list of options on the right, select **Mail**.



Fig. 5.1 - Opening the Mail section in cPanel.

4. From your list of options under the **Mail Manager Main Menu**, select **Manage/Add/Remove Accounts**.

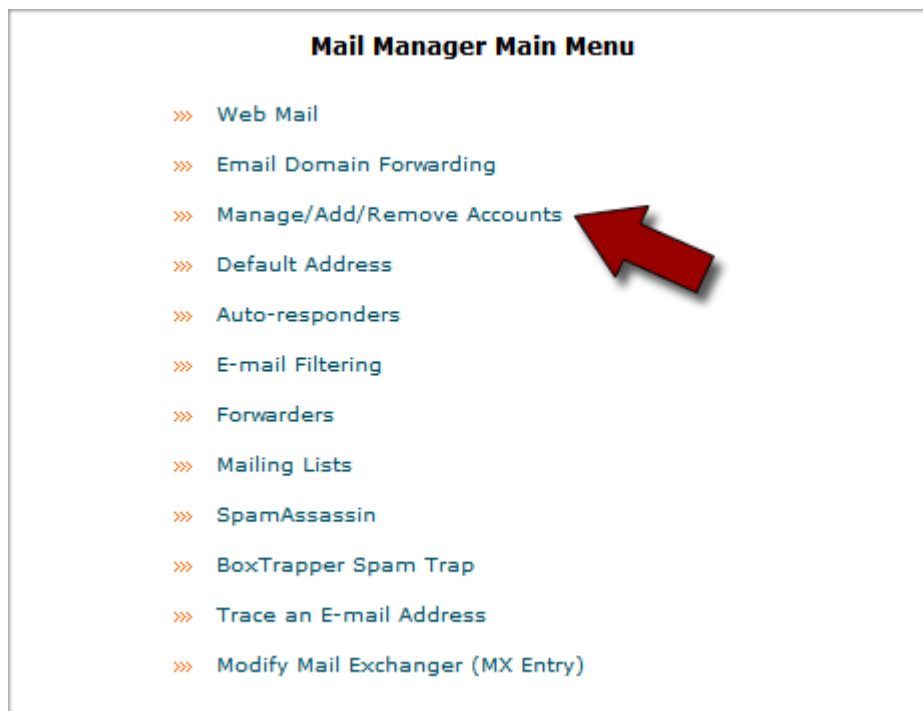


Fig. 5.2 - Manage/Add/Remove email accounts.

- On the **Mail Account Maintenance** page, click **Add Account**.

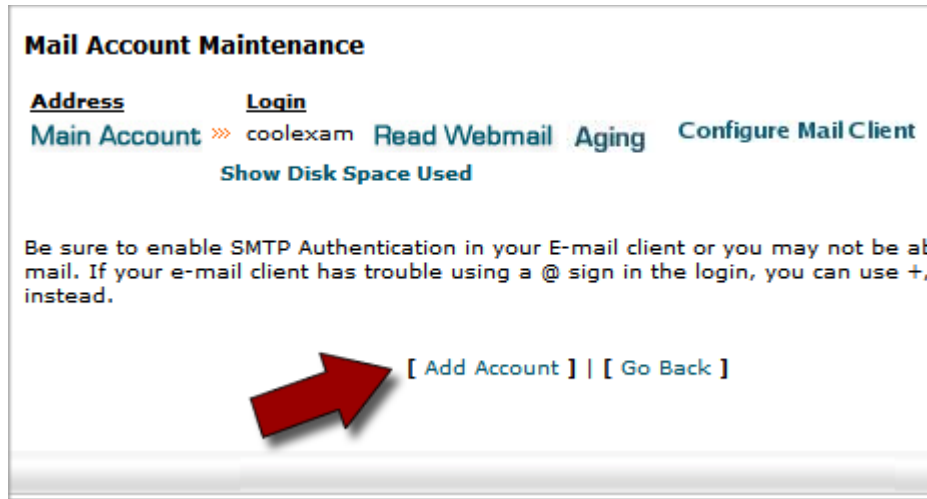


Fig. 5.3 - Adding a new mail account in cPanel.

- Enter an **E-mail** name for this account. In this example, we'll create an account for Jane Smith (janessmith@coolexample.com).
- Create a **Password** for this account.

Fig. 5.4 - Specifying your account details.



NOTE

You can also specify the mailbox quota for this email account on this page.

- Click **Create**.

Once the Account Created message displays, you can connect to your account using an email client or Webmail.

CONNECTING TO YOUR EMAIL ACCOUNT

Accessing Your Account Using an Email Client

To access your email account using an email client, such as Outlook®, Thunderbird™, or Entourage®, you need the following information:

Email Client Settings for Mail on Your Dedicated Server	
User Name	The name of the email account you created in cPanel, for example <code>janesmith@coolexample.com</code> .
Password	The password you specified in cPanel when you set up your email account.
POP3 Setting	<code>mail.yourdomainname.com</code> Where <i>yourdomainname.com</i> is your domain name.
SMTP Setting	<code>mail.yourdomainname.com</code> Where <i>yourdomainname.com</i> is your domain name. The outgoing (SMTP) server requires authentication and uses the same user name and password as the incoming (POP3) server.

For more information about setting up mail accounts in cPanel, you can look at the documentation available on cPanel's Web site.

Accessing WebMail for Domains on Your Server

Instead of accessing your email using a traditional email client, you can access your email on the Web using a standard Web browser.

cPanel provides you with three different Webmail clients. You can access Webmail for your domain through the cPanel interface.

► To Access Webmail Using cPanel

1. Log in to cPanel for your domain. Go to the following URL:

```
http://yourdomainnamehere.com/cpanel
```

Where *yourdomainnamehere.com* is the domain name you want to manage.

2. Log in using the user name and password you created when you set up the account for your domain in WebHost Manager.

3. From the list of options on the right, select **Webmail**.

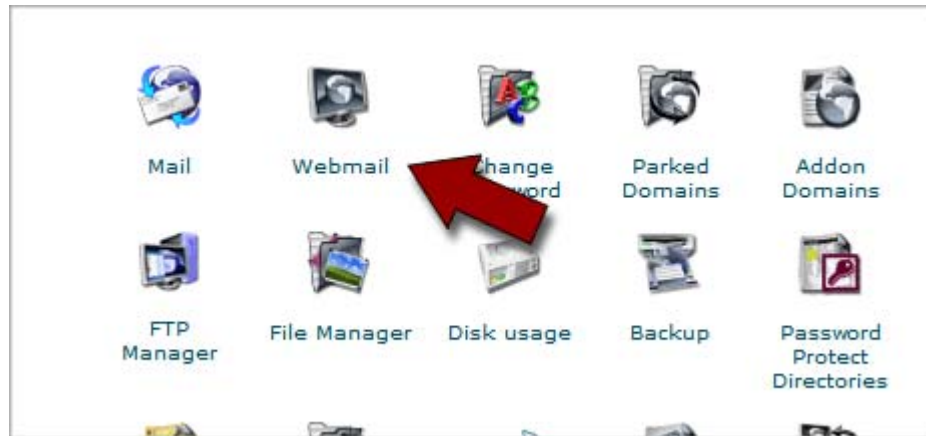


Fig. 5.5 - Accessing Webmail in cPanel.

4. Select the Webmail program you want to use. You may have to set up your Webmail client the first time you access it.
5. Sign in to your account using the user name and password you set up in cPanel or that was provided to you by your administrator.